

REVISION DATA		
REV	DESCRIPTION	DATE
A0	NEW DRAWING	16-4-15

Technical Data

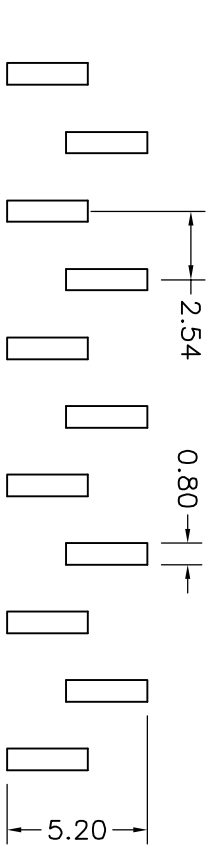
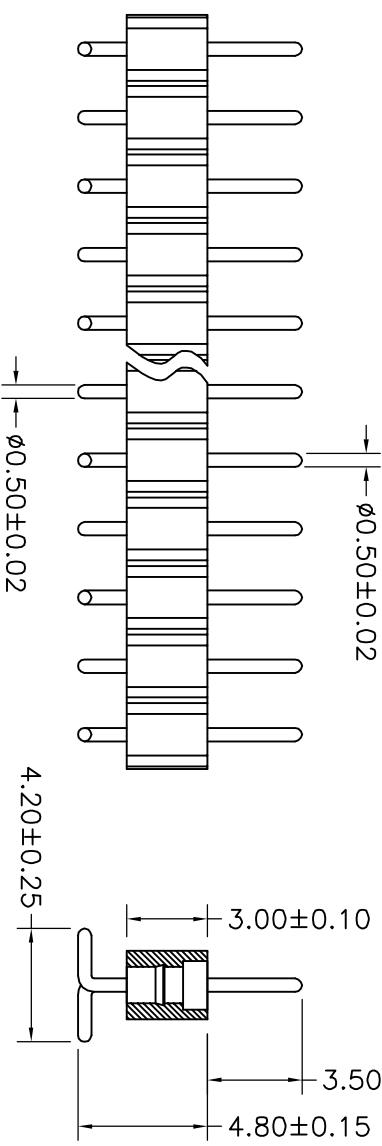
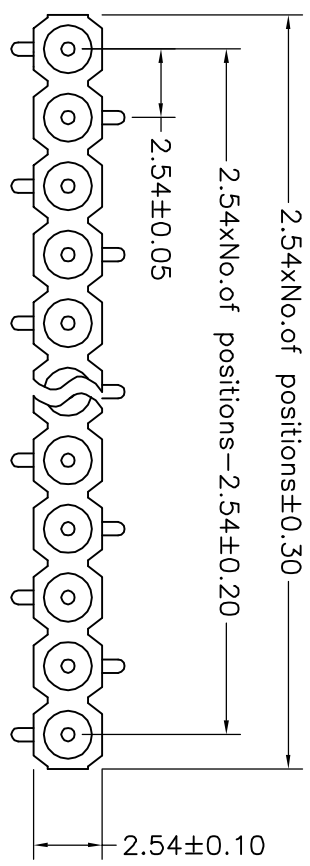
Material: Pin (outer sleeve): Brass, machined CuZn38Pb2
 Plating (outer sleeve):
 Tin Plated: 2μm/80μm"Ni, 5μm/200μ"Sn
 Gold Plated: 2μm"/80μm"Ni, 0.8μ" gold
 Insulator: PPS UL94V-0

Electrical:

Current rating: 3Amps/contact max.
 Contact resistance: ≤4mΩ/contact
 Insulation resistance: ≥1000MΩ at V=100V
 Dielectric Withstanding Voltage: 1000V AV Min
 Operating voltage: 60VAC/DC

Mechanical:

Operating temperature: -40 °C to +105 °C
 Soldering temperature: +255 °C
 Critical Dimensions: (*)



P.C.B LAYOUT

QZT	X	X	-	X	XX	XX	XXXX	X
Pitch (mm) A=1.27 B=1.778 C=2.00 D=2.54	Insulator Type code 1-Single row 2-Double row 3-Three row	Angel Options D=180° R=90° S-SMT I=IC	No. of Positions XX positions	Pin plated T1=Tin 150u" T2=Tin 200u" G1=G/F G2=Gold 3u" G3=Gold 10u" G4=Gold 15u" G5=Gold 30u"	Pin Length Options 1000=10.00mm	Specifications A=Public seat B=Female seat		

1	2	3	4
---	---	---	---

Qzconn 东莞市启之泰电子科技有限公司
 启之泰

TOLERANCE	PROJECTION	TITLE:
X, XXX ±0.05 X, XX ±0.15 X, X ±0.20 X, ±0.30 ANGLE ±5.0°	DATE: 2016-4-15 DRAWN: TANG-S-G CHECKED: APPROVED:	Socket Connectors 2.54mm L=10.00mm ø0.50 SMT A型 PART NO: QZTD1-SXXXX1000A-1 DRAWING NO: 2016041507

5	6	7
---	---	---