

REVISION DATA		
REV	DESCRIPTION	DATE
A0	NEW DRAWING	16-4-20

Technical Data

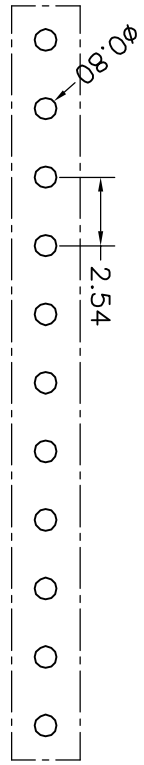
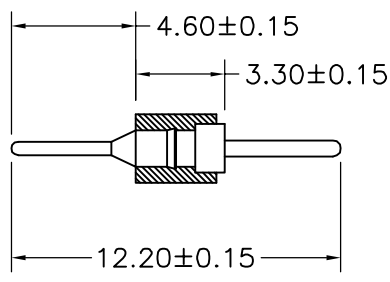
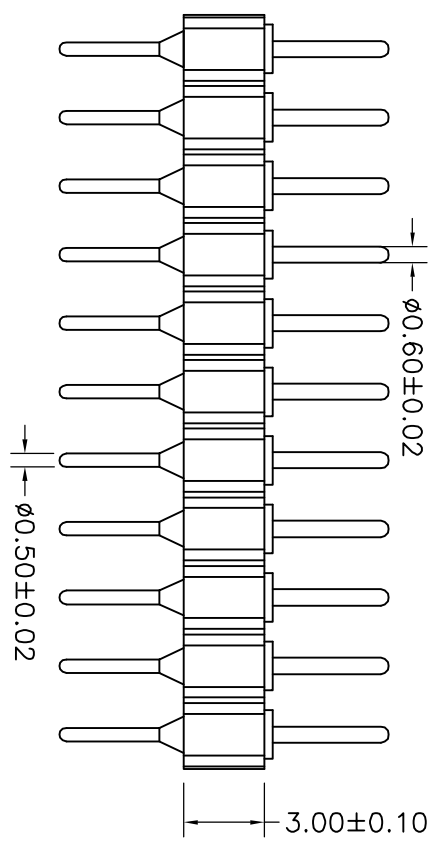
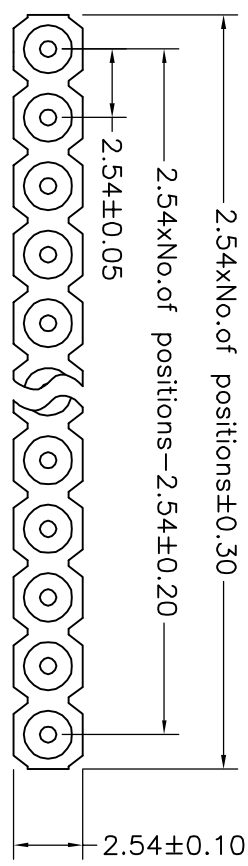
Material: Pin(outer sleeve): Brass, machined CuZn38Pb2
 Plating(outer sleeve):
 Tin Plated: 2μm/80μm“Ni, 5μm/200μ”Sn
 Gold Plated: 2μm”/80μm”Ni, 0.8μ” gold
 Insulator: PPS UL94V-0

Electrical:

Current rating: 3Amps/contact max.
 Contact resistance: ≤ 4mΩ/contact
 Insulation resistance: ≥ 1000MΩ at V=100V
 Dielectric Withstanding Voltage: 1000V AV Min
 Operating voltage: 60VAC/DC

Mechanical:

Operating temperature: -40 ° C to +105 ° C
 Soldering temperature: +255 ° C



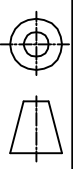
P. C. B LAYOUT

QZT	X	X	-	X	XX	XX	XXXX	X
Pitch(mm) A=1.27 B=1.778 C=2.00 D=2.54	Insulator Type code 1=Single row 2=Double row 3=Three row	Angel Options D=180° R=90° S=SMT I=IC	No. of Positions XX	Pin plated T1=Tin 150u” T2=Tin 200u” G1=6/F G2=Gold 3u” G3=Gold 10u” G4=Gold 15u” G5=Gold 30u”	Pin Length Options 1220=12.20mm	Specifications A=Public seat B=Female seat		

TOLERANCE

X. XXX	± 0.05
X. XX	± 0.15
X. X	± 0.20
X.	± 0.30
ANGLE	± 5.0°

PROJ ECTON



TITLE:

Socket Connectors 2.54mm
 L=12.20mm H=3.0mm

DATE: 2016-4-20	DRAWN: TANG-S-G	PART NO: QZTD1-DXXXX1220A
CHECKED:	DRAWING NO: 2016042001	REV: A0
APPROVED:	UNIT: mm	SCALE: FULL
	SIZE: A4	

qztconn 启之泰 东莞市启之泰电子科技有限公司