

2

3

4

5

6

7

REVISION DATA		
REV	DESCRIPTION	DATE
A0	NEW DRAWING	16-4-05

Technical Data

Material:

Pin(outer sleeve): Brass, machined CuZn38Pb2

Plating(outer sleeve):

Tin Plated: 2μm/80μm"Ni, 5μm/200μ"Sn

Gold Plated: 2μm"/80μm"Ni, 0.8μ" gold

Insulator: PPS UL94V-0

Electrical:

Current rating: 3Amps/contact max.

Contact resistance: ≤4mΩ/contact

Insulation resistance: ≥1000MΩ at V=100V

Dielectric Withstanding Voltage: 1000V AV Min

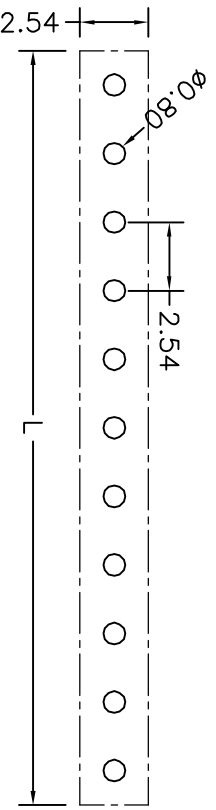
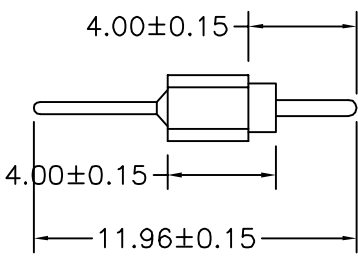
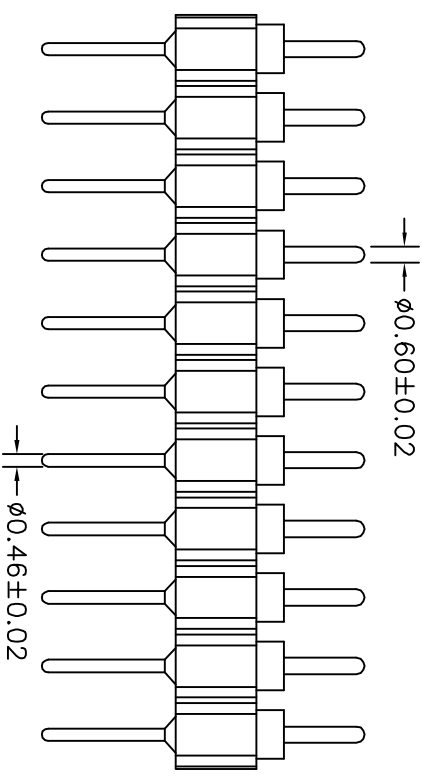
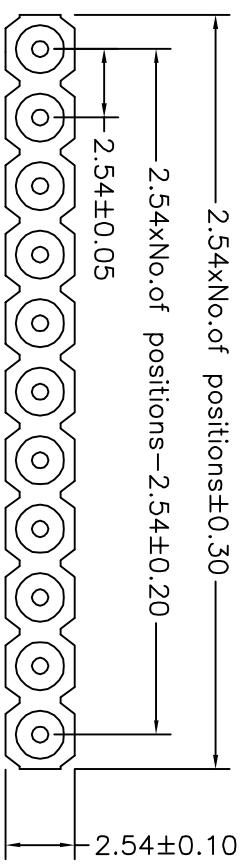
Operating voltage: 60VAC/DC

Mechanical:

Operating temperature: -40 ° C to +105 ° C

Soldering temperature: +255 ° C

Critical Dimensions: (\*)



P. C. B LAYOUT

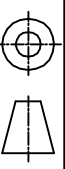
QZT	X	X	-	X	XX	XX	XXXX	X
Pitch(mm) A=1.27 B=1.778 C=2.00 D=2.54	Insulator Type code 1=Single row 2=Double row 3=Three row			Angel Options D=180° R=90° S=SMT I=IC	No. of Positions XX	Pin plated T1=Tin 150u" T2=Tin 200u" G1=6/F G2=Gold 3u" G3=Gold 10u" G4=Gold 15u" G5=Gold 30u"	Pin Length Options 1196=11.96mm	Specifications A=Public seat B=Female seat

dztcconn 东莞市启之泰电子科技有限公司

TOLERANCE

X, XXX	±0.05
X, XX	±0.15
X, X	±0.20
X, X	±0.30
ANGLE	±5.0°

PROJECTION



TITLE:

Socket Connectors 2.54mm

L=11.96mm H=3.0mm 常规型

PART NO: QZTD1-DXXXX1196A-1

DRAWING NO: 2016040509

APPROVED:

REV: A0	UNIT: mm	SCALE: FULL	SIZE: A4
---------	----------	-------------	----------

1 2 3 4 5 6 7