

2

3

4

5

6

7

REVISION DATA		
REV	DESCRIPTION	DATE
A0	NEW DRAWING	16-5-3

Technical Data

Material:

Pin(outer sleeve):Brass,machined CuZn38Pb2

Plating(outer sleeve):

Tin Plated:2μm/80μm²Ni,5μm/200μ²Sn

Gold Plated:2μm²/80μm²Ni,0.8μ² gold

Plating(Contact):2μm/80μ²Ni, gold or Tin plated

Insulator:PPS UL94V-0

Clip(Contact 6 Flinger):Beryllium copper, heat teated

Electrical:

Current rating:3amps/contact max.

Contact resistance:≤4mΩ/contact

Insulation resistance:≥1000MΩ at V=100V

Dielectric Withstanding Voltage:1000V AV Min

Operaling voltage:60VAC/DC

Mechanical:

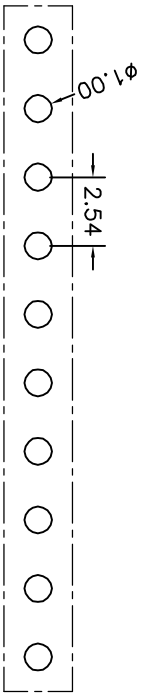
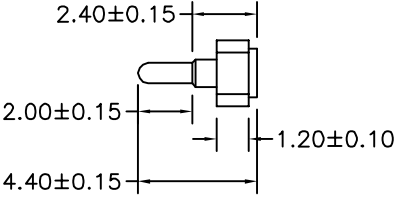
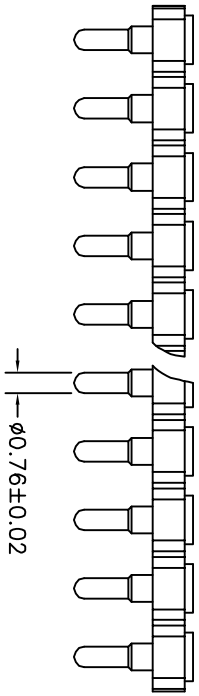
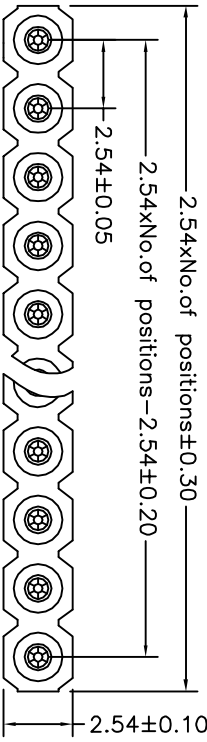
Average Insertlon force with steel pin of ∅0.66mm/0.38":<60g

Average withdrawal force with steel pin of ∅0.66mm/0.38":<15g

Mechanical life cycle:min 200

Operaling temperature:-40° C to+105° C

Soldering temperature:+255° C



P. C. B LAYOUT

Q2T	X	X	-	X	XX	XX	XXXX	X
Pitch(mm) A=1.27 B=1.78 C=2.00 D=2.54	Insulator Type code 1=Single row 2=Double row 3=Three row	Angel Options D=180° R=90° S=SMT I=IC	No. of Positions XX	Pin plated T1=Tin 150μ" T2=Tin 200μ" G1=6/F G2=Gold 3μ" G3=Gold 10μ" G4=Gold 15μ" G5=Gold 30μ"	CLIP plated T1=Tin 150μ" T2=Tin 200μ" G1=6/F G2=Gold 3μ" G3=Gold 10μ" G4=Gold 15μ" G5=Gold 30μ"	Pin Length Options 0440=4.40mm	Specifications A=Public seat B=Female seat	

aztconn 东莞启之泰电子科技有限公司

TOLERANCE	PROJECTION	TITLE:
X,XXX X,XX X,X	DATE: DRAWN: CHECKED: APPROVED:	Single row socket connector 2.54mm L=4.40mm H=1.20

ANGLE	DRAWING NO.:2016050305	PART NO.:Q2TD1-DXXXXX0440B
±0.05 ±0.15 ±0.20 ±0.30 ±5.0°	TANG-S-G	REV: A0 UNIT: mm SCALE: FULL SIZE: A4