

REVISION DATA		
REV	DESCRIPTION	DATE
A0	NEW DRAWING	16-5-3

Technical Data

Material:

Pin(outer sleeve): Brass, machined CuZn38Pb2

Plating(outer sleeve):

Tin Plated: 2 μ m/80 μ m²Ni, 5 μ m/200 μ Sn

Gold Plated: 2 μ m²/80 μ m²Ni, 0.8 μ gold

Plating(Contact): 2 μ m/80 μ NI, gold or Tin plated

Insulator: PPS UL94V-0

Clip(Contact 6 Flinger): Beryllium copper, heat treated

Electrical:

Current rating: Amps/contact max.

Contact resistance: $\leq 4m\Omega$ /contact

Insulation resistance: $\geq 1000M\Omega$ at V=100V

Operating voltage: 60VAC/DC

Mechanical:

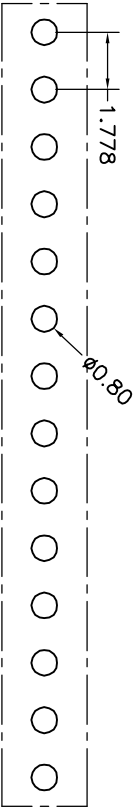
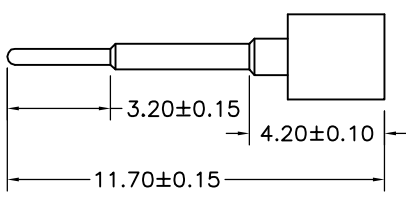
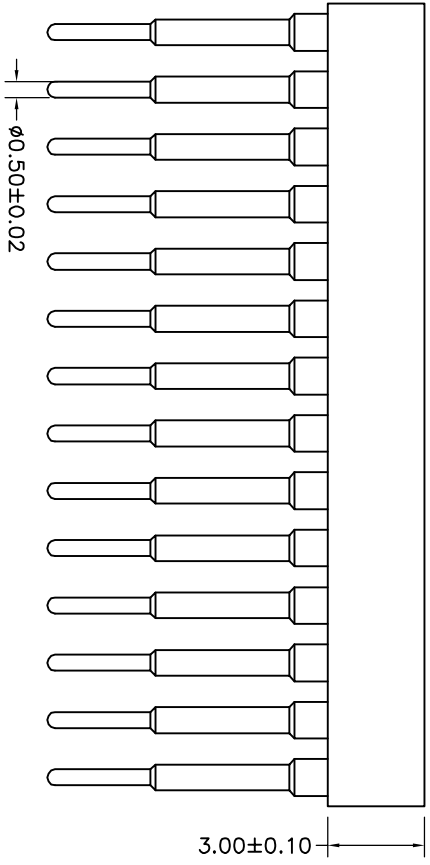
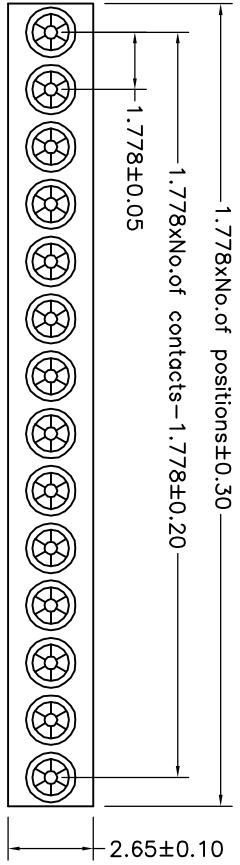
Average Insertion force with steel pin of $\phi 0.432$: $< 90g$

Average withdrawal force with steel pin of $\phi 0.432$: $> 25g$

Mechanical life cycle: min 200

Operating temperature: $-40^{\circ}C$ to $+105^{\circ}C$

Soldering temperature: $+255^{\circ}C$



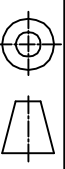
P. C. B LAYOUT

QZT	X	X	-	X	XX	XX	XX	XXXX	X
Pitch(mm) A=1.27 B=1.778 C=2.00 D=2.54	Insulator Type code 1=Single row 2=Double row 3=Three row	Angel Options D=180° R=90° S=SWT I=IC	No. of Positions XX positions	Pin plated T1=Tin 150u" T2=Tin 200u" G1=6/F G2=gold 3u" G3=gold 10u" G4=gold 15u" G5=gold 30u"	CLIP plated T1=Tin 150u" T2=Tin 200u" G1=6/F G2=gold 3u" G3=gold 10u" G4=gold 15u" G5=gold 30u"	Pin Length Options L170=L1.70mm	Specifications A=Public seat B=Female seat		

TOLERANCE

X. XXX	±0.05
X. XX	±0.15
X. X	±0.20
X.	±0.30
ANGLE	±5.0°

PROJECTION



TITLE:

Single row socket connector
1.778mm L=11.70mm

DATE: 2016-5-3
DRAWN: TANG-S-G
PART NO: QZT1B1-DXXXXX1170B

CHECKED:
DRAWING NO: 2016050308

APPROVED:	REV: A0	UNIT: mm	SCALE: FULL	SIZE: A4
-----------	---------	----------	-------------	----------

qzconn 东莞市启之泰电子科技有限公司
启之泰