

REVISION DATA		
REV	DESCRIPTION	DATE
A0	NEW DRAWING	16-4-12

Technical Data

Material:
 CONTACT::phocphor brone
 Plating (outer sleeve):
 Tin Plated:2 μ m/80 μ m"Ni, 5 μ m/200 μ "Sn
 Gold Plated:2 μ m"/80 μ m"Ni, 0.8 μ " gold
 Insulator:PPS UL94V-0

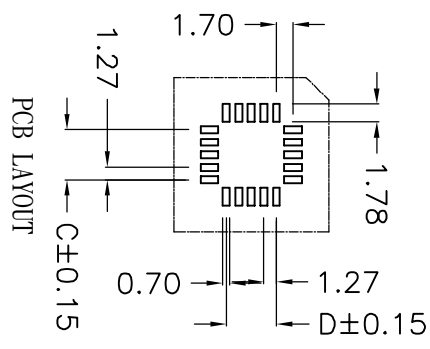
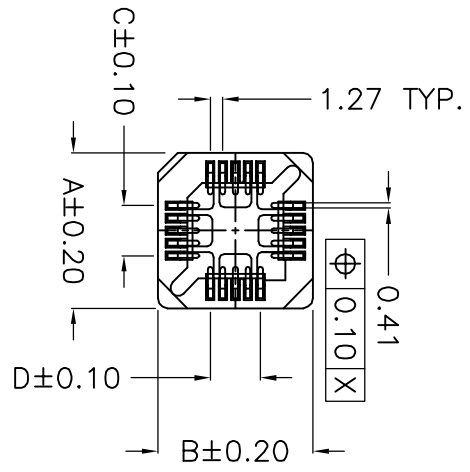
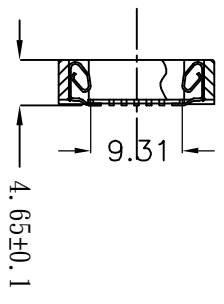
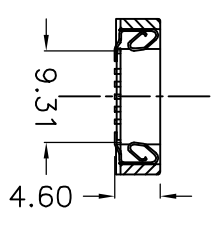
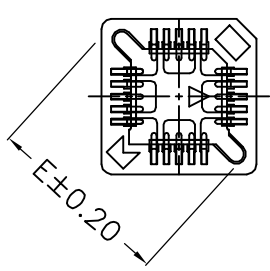
Electrical:

Current rating:2Amps/contact max.
 Contact resistance:max 20m Ω
 Insulation resistance:min 5000M Ω
 Dielectric strength:min 600V RMS

Mechanical:

Contact pressure:min 1.5N per contact
 Mechanical life:min 50 cycles
 Operating temperature:-40 $^{\circ}$ C to+105 $^{\circ}$ C
 Soldering temperature:+255 $^{\circ}$ C

NO.OF CONTACTS	A	B	C	D	E
20P	15.65	15.65	5.08	5.08	16.80



QZT	X	X	XX	XX	X	XXX
Pitch (mm) A=1.27 B=1.778 C=2.00 D=2.54	Angel Options P=PGA C1=PLCC-SMT C2=PLCC-DIP	No. of Positions XX positions	Pin plated T1=Tin 150u" T2=Tin 200u" G1=G/F G2=Gold 3u" G3=Gold 10u" G4=Gold 15u" G5=Gold 30u"	Insulator color 1=Black 2=Brown	Serial number 001-999	

启之泰 东莞市启之泰电子科技有限公司

TOLERAVCE

X,XXX	±0.05
X,XX	±0.15
X,X	±0.20
X.	±0.30
ANGLE	±5.0 $^{\circ}$

PROJECTION



DATE:	2016-4-12
DRAWN:	TANG-S-G

TITLE:

PLCC Connectors 1.27mm

CHECKED:		PART NO:QZTA-C120XXX001
APPROVED:		DRAWING NO:2016041201
REV: A0	UNIT: mm	SCALE: 1:1
		SIZE: A4
		PAGE: 1/2