

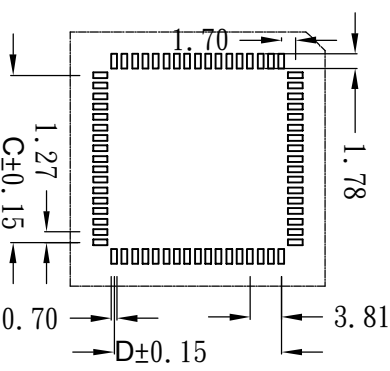
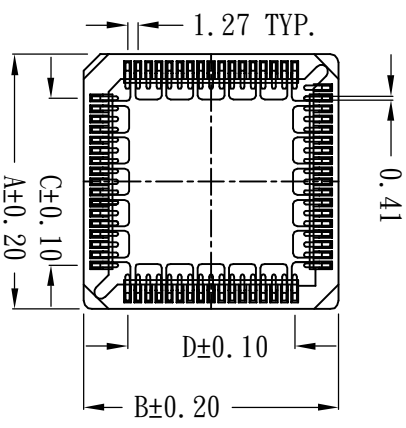
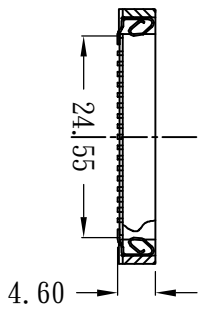
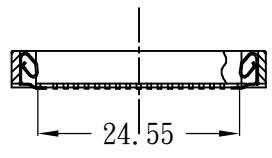
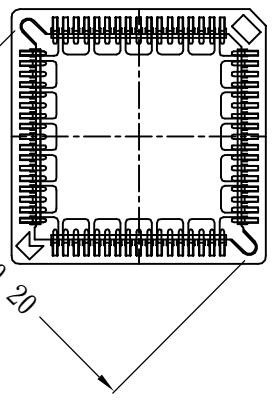
REVISION DATA		
REV	DESCRIPTION	DATE
A0	NEW DRAWING	16-4-12

Technical Data  
 Material:  
 CONTACT::phocphor brone  
 Plating (outer sleeve):  
 Tin Plated:2 $\mu$ m/80 $\mu$ m"Ni, 5 $\mu$ m/200 $\mu$ "Sn  
 Gold Plated:2 $\mu$ m"/80 $\mu$ m"Ni, 0.8 $\mu$ " gold  
 Insulator:PPS UL94V-0

Electrical:  
 Current rating:2Amps/contact max.  
 Contact resistance:max 20m $\Omega$   
 Insulation resistance:min 5000M $\Omega$   
 Dielectric strength:min 600V RMS

Mechanical:  
 Contact pressure:min 1.5N per contact  
 Mechanical life:min 50 cycles  
 Operating temperature:-40 $^{\circ}$  C to+105 $^{\circ}$  C  
 Soldering temperature:+255 $^{\circ}$  C

NO.OF CONTACTS	A	B	C	D	E
68P	30.95	30.95	20.32	20.32	39.10



PCB LAYOUT

QZT	X	X	XX	XX	X	XXX
Pitch (mm) A=1.27 B=1.778 C=2.00 D=2.54	Angel Options P=PGA C1=PLCC-SMT C2=PLCC-DIP	No. of Positions XX positions	Pin plated T1=Tin 150u" T2=Tin 200u" G1=G/F G2=Gold 3u" G3=Gold 10u" G4=Gold 15u" G5=Gold 30u"	Insulator color 1=Black 2=Brown	Serial number 001-999	

**aztconn** 启之泰 东莞市启之泰电子科技有限公司  
 TITLE:  
 PLCC Connectors 1.27mm

TOLERANCE	PROJECTION	CHECKED:	DRAWING NO:2016041206
X.XXX ±0.05	DATE: 2016-4-12		PART NO:QZTA-C168XXX006
X.XX ±0.15	DRAWN: TANG-S-G		
X.X ±0.20	CHECKED:		
X. ±0.30	APPROVED:		
ANGLE ±5.0 $^{\circ}$			

REV: A0	UNIT: mm	SCALE: 1:1	SIZE: A4	PAGE: 1/2
---------	----------	------------	----------	-----------