

2

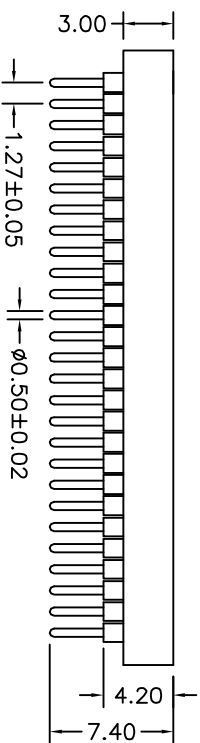
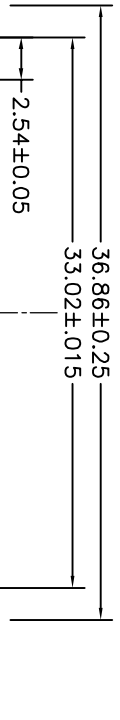
3

4

5

6

7



QZT	X	X	XXX	X	XX	XXXX	X
Pitch(mm) A=2.54X2, 54 B=2.54X1, 27 C=1.27X1, 27	Angel Options P=PA C1=PLCC-SMT C2=PLCC-DIP	No. of Positions XXX positions 304=304PIN	Pin plated T1=Tin 150u" T2=Tin 200u" G1=6/F G2=gold 3u" G3=gold 10u" G4=gold 15u" G5=gold 30u"	CLIP plated T1=Tin 150u" T2=Tin 200u" G1=6/F G2=gold 3u" G3=gold 10u" G4=gold 15u" G5=gold 30u"	Pin Length Options 07/40=7.40mm	Specifications A=Public seat B=Female seat	

REVISION DATA		
REV	DESCRIPTION	DATE
A0	NEW DRAWING	16-5-15

Technical Data

Material:

Pin(outer sleeve):Brass, machined CuZn38Pb2

Plating(outer sleeve):

Tin Plated:2µm/80µm"Ni, 5µm/200µ"Sn

Gold Plated:2µm"/80µm"Ni, 0.8µ" gold

Plating(Contact ):2µm/80µ"Ni, gold or Tin plated

Insulator:PPS UL94V-0

CLIP(Contact 4 Flinger):Beryllium copper,heat treated

Electrical:

Current rating:3Amps/contact max.

Contact resistance: ≤4mΩ/contact

Insulation resistance: ≥1000MΩ at V=100V

Operating voltage:60VAC/DC

Mechanical:

Average Insertion force with steel pin of ∅0.432: <250g

Average withdrawal force with steel pin of ∅0.432: >70g

Mechanical life cycle:min 200

Operating temperature:-40 ° C to+105 ° C

Soldering temperature:+255 ° C

**dzconn** 东莞市启之泰电子科技有限公司

启之泰

TOLERANCE

X,XXX ±0.05

X,XX ±0.15

X, X ±0.20

X, ±0.30

ANGLE ±5.0°

PROJECTION



DATE: 2016-5-15

DRAWN: TANG-S-G

TITLE:

Pin grid array sockets  
2.54x1.27mm 304PIN

PART NO:QZTB-P304XXXX0740B

DRAWING NO:2016051701

REV:	UNIT:	SCALE:	SIZE:	PAGE:
A0	mm	1:1	A4	1/2

1

2

3

4

5

6

7

A

C

D

E